

MONTHLY MEMBERSHIP PROGRESS REPORT

LOCATION PRINCE EDWARD ISLAND

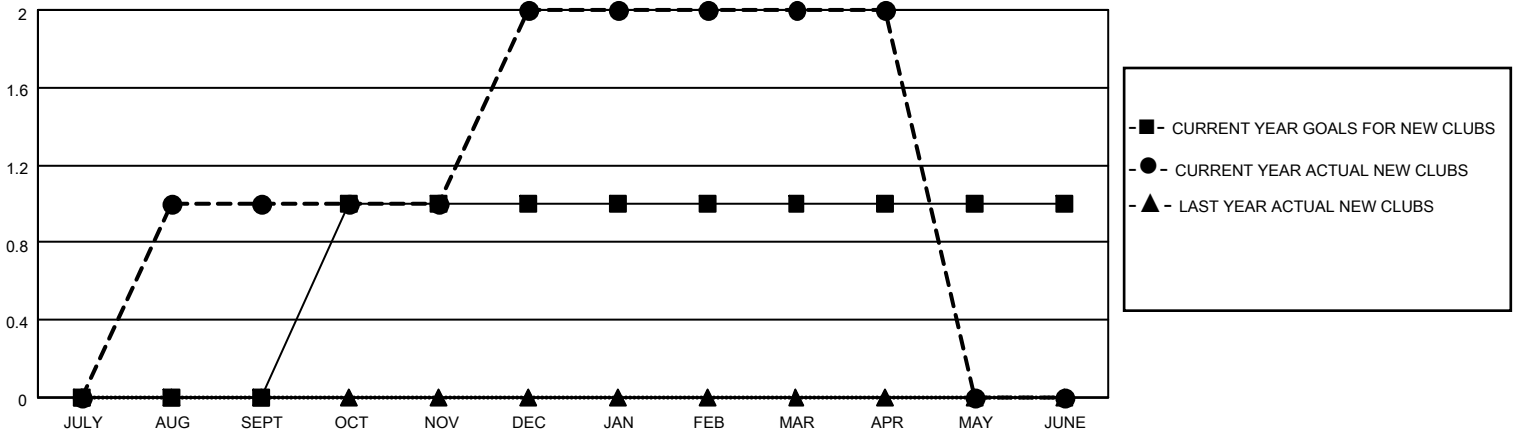
District N 1

Results as of: 4/30/2021

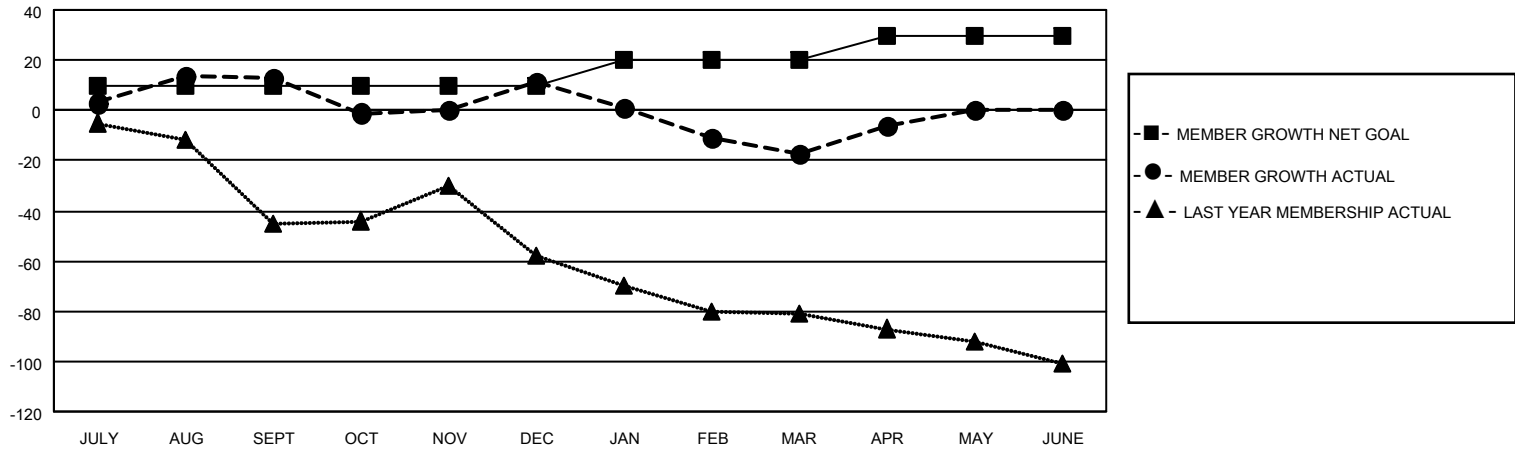
Clubs			
RESULTS FOR 2020-2021			
QUARTER	NEW CLUB GOAL	NEW CLUBS	DROPPED CLUBS
JULY/AUG/SEPT	0	1	0
OCT/NOV/DEC	1	1	0
JAN/FEB/MAR	0	0	1
APR/MAY/JUNE	0	0	0

Members			
RESULTS FOR 2020-2021			
QUARTER	MEMBER GROWTH NET GOAL	MEMBER GROWTH ACTUAL	DROPPED MEMBERS ACTUAL (including transfers)
JULY/AUG/SEPT	10	36	23
OCT/NOV/DEC	0	62	63
JAN/FEB/MAR	10	27	50
APR/MAY/JUNE	10	20	8

GOALS AND ACTUAL NEW CLUBS CUMULATIVE



GOALS AND ACTUAL MEMBERS CUMULATIVE



DROPPED CLUBS: 1

38 CLUBS OF 80 ADDED 1 OR MORE NEW MEMBERS

GENDER DISTRIBUTION

MALE 1,260 (73.86%)
 FEMALE 446 (26.14%)

DROPPED MEMBERS

DECEASED	30
CLUB CANCELLED	9
OTHER	105
TOTAL	144

[CLICK HERE FOR CUMULATIVE MEMBERSHIP DATA](#)

TOTAL FAMILY UNIT MEMBERS	289
FAMILY MEMBERS PAYING HALF DUES	147